



AFTERMARKET

Core acceptance criteria

TEBS-E



ECO LOGICAL
NOMICAL



WABCO
REMAN SOLUTIONS

General information

ACCEPTED



- Core must be in an off-vehicle condition.
- Core must meet acceptance standards established within this document.
- Core mechanical integrity must remain intact (no holes, cracks, disassembled components)
- Any electronic inside core must not have contact with environmental pollutants, especially water.

REJECTED



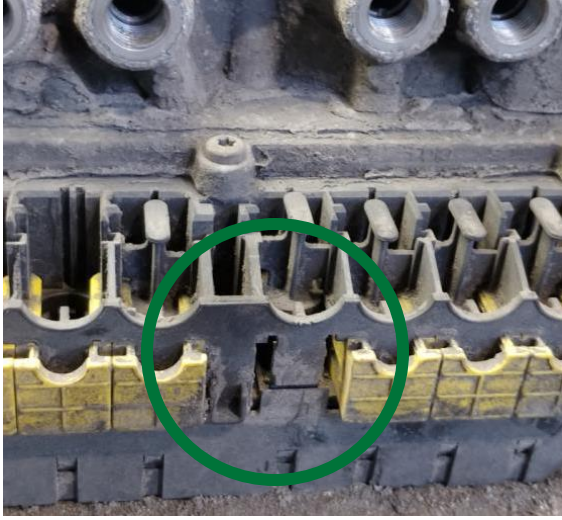
- The core is a not complete unit and disassembled or altered in any manner
- The core is damaged by non-operational causes such as car crash damage, fire, flood, crack.
- The core has been improperly repaired / serviced.

Acceptance criteria

ACCEPTED



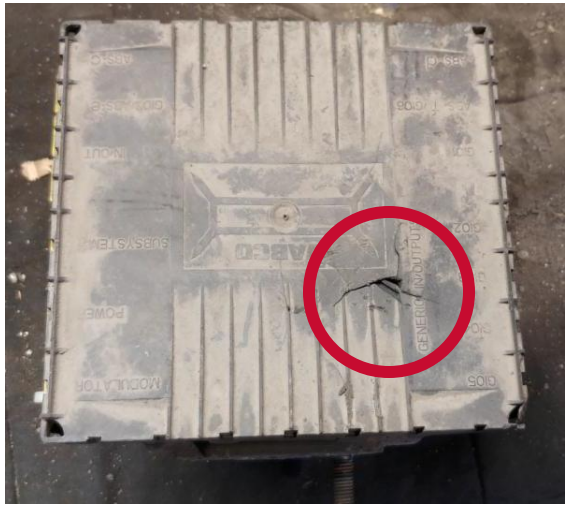
Missing protection covers and plugs



REJECTED



Holes, cracks in ECU cover



ACCEPTED



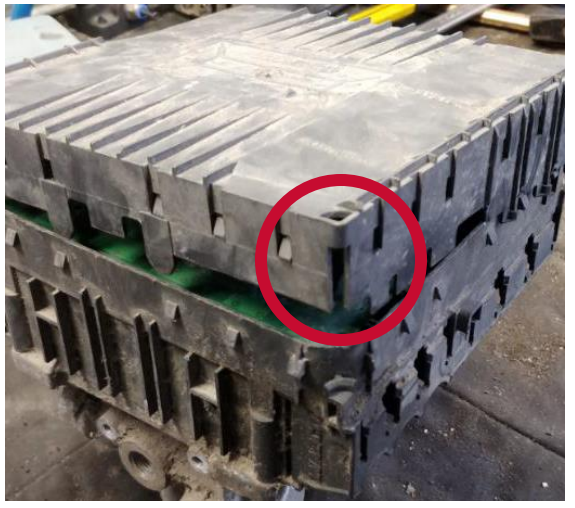
Damaged ribs on the ECU Cover



REJECTED



Partially dismantled

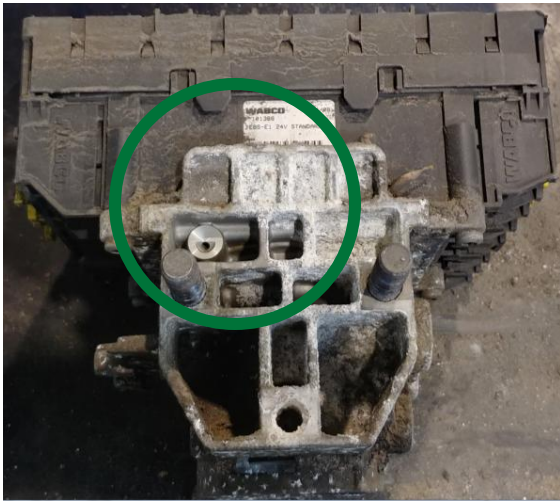


Acceptance criteria

ACCEPTED



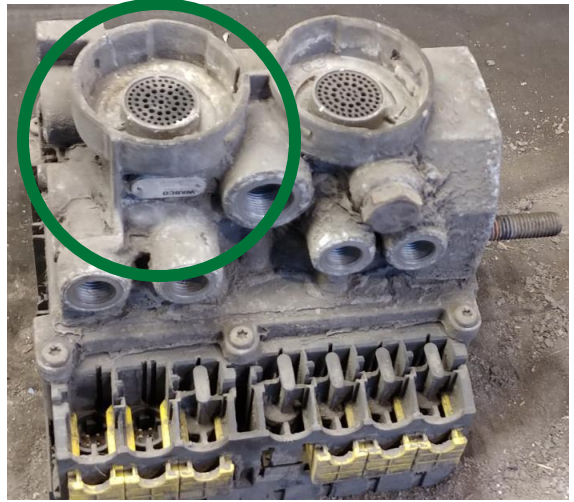
Surface corrosion



ACCEPTED



Missing silencers



ACCEPTED



Missing studs



ACCEPTED



Damaged ports



Acceptance criteria

ACCEPTED



Missing small plastic parts on ECU



REJECTED



Deformed / distorted ECU



Your used part can go for *a second life!* Return it to WABCO and get your refund!

When you buy remanufactured part from WABCO Reman Solutions and return your used cores to us, you will get a **refund!** On top of that, by producing less waste, you will also **save on costs of disposal** and **benefit the environment.**



THIS IS HOW IT WORKS:

- **Use the box** of the remanufactured parts to return your used cores.



- **Contact your authorized WABCO partner**
<https://www.wabco-customercentre.com/catalog/en/ALF>
- **You will receive a refund** for the surcharge you've paid with the purchase of your remanufactured parts.

It's as simple as that!

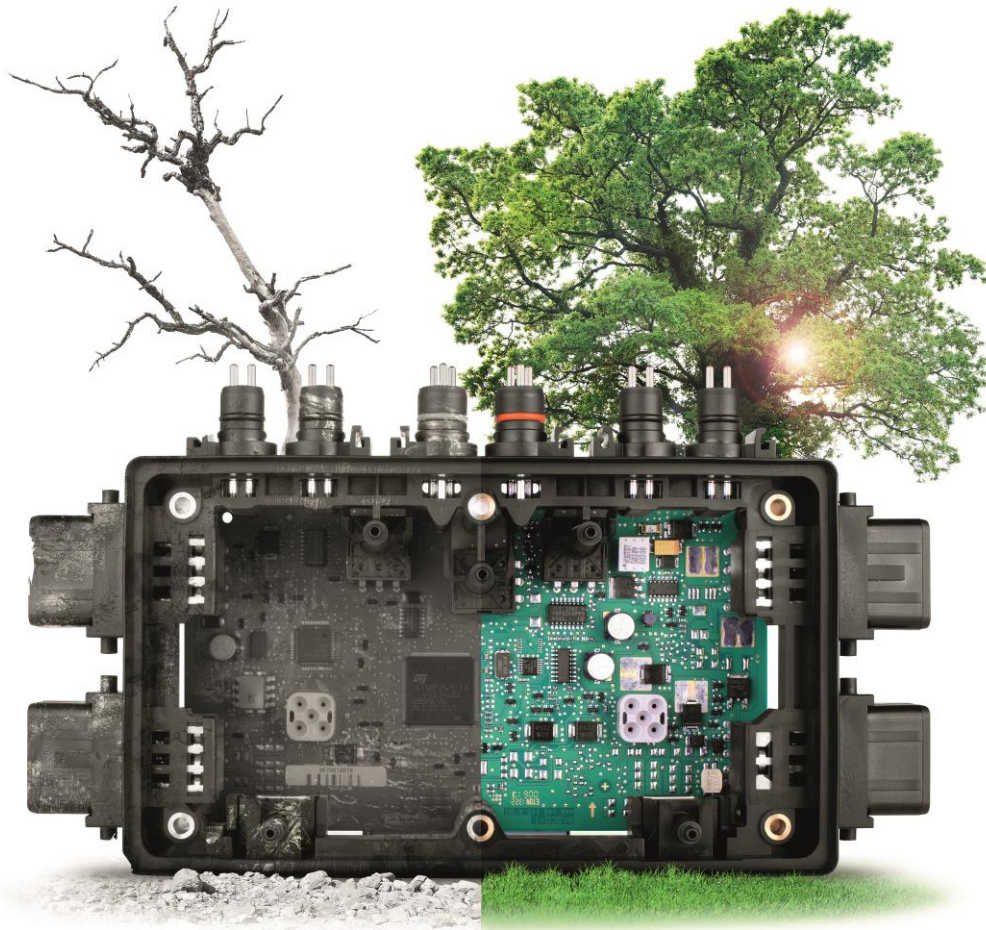
For more info, visit [WABCO Customer Centre](#)



AFTERMARKET

Core acceptance criteria

TEBS-D



ECO LOGICAL
NOMICAL



WABCO
REMAN SOLUTIONS

General information

ACCEPTED



- Core must be in an off-vehicle condition.
- Core must meet acceptance standards established within this document.
- Core mechanical integrity must remain intact (no holes, cracks, disassembled components)
- Any electronic inside core must not have contact with environmental pollutants, especially water.

REJECTED



- The core is a not complete unit and disassembled or altered in any manner
- The core is damaged by non-operational causes such as car crash damage, fire, flood, crack.
- The core has been improperly repaired / serviced.

Acceptance criteria

ACCEPTED



Surface corrosion



ACCEPTED



Painted device



ACCEPTED



Missing silencers



ACCEPTED



Missing studs



Acceptance criteria

ACCEPTED



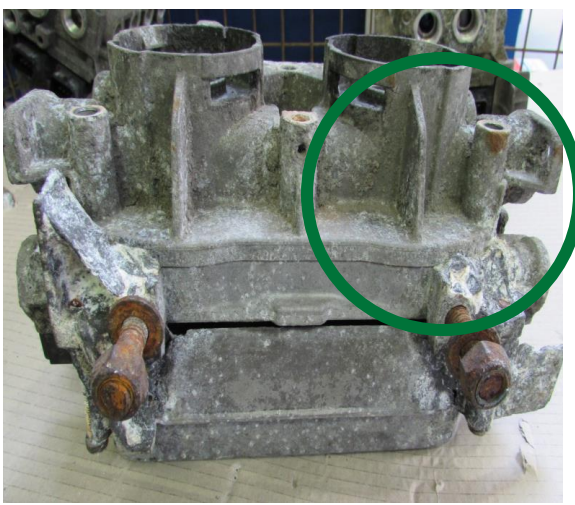
Damaged external cover elements



ACCEPTED



Damaged wings



ACCEPTED



Damaged connectors, missing covers and hangers

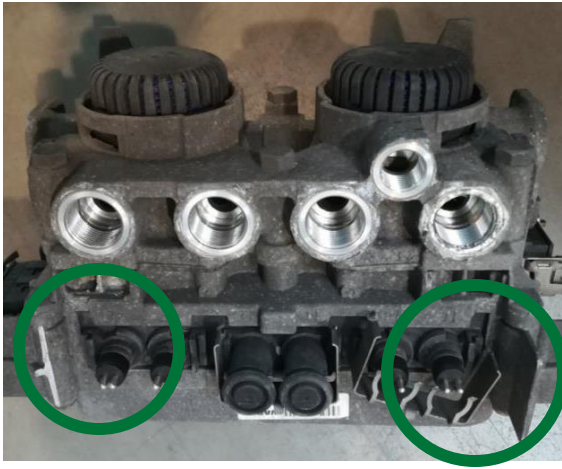


Acceptance criteria

ACCEPTED



Damaged connectors, missing covers



ACCEPTED



Damaged ports, scratches on the sealing surface



Acceptance criteria

REJECTED



Holes in ECU cover



REJECTED



Holes in ECU cover



REJECTED



Partially dismantled



Your used part can go for *a second life!* Return it to WABCO and get your refund!

When you buy remanufactured part from WABCO Reman Solutions and return your used cores to us, you will get a **refund!** On top of that, by producing less waste, you will also **save** on costs of disposal and **benefit the environment.**



THIS IS HOW IT WORKS:

- **Use the box** of the remanufactured parts to return your used cores.



- **Contact your authorized WABCO partner**
<https://www.wabco-customercentre.com/catalog/en/ALF>
- **You will receive a refund** for the surcharge you've paid with the purchase of your remanufactured parts.

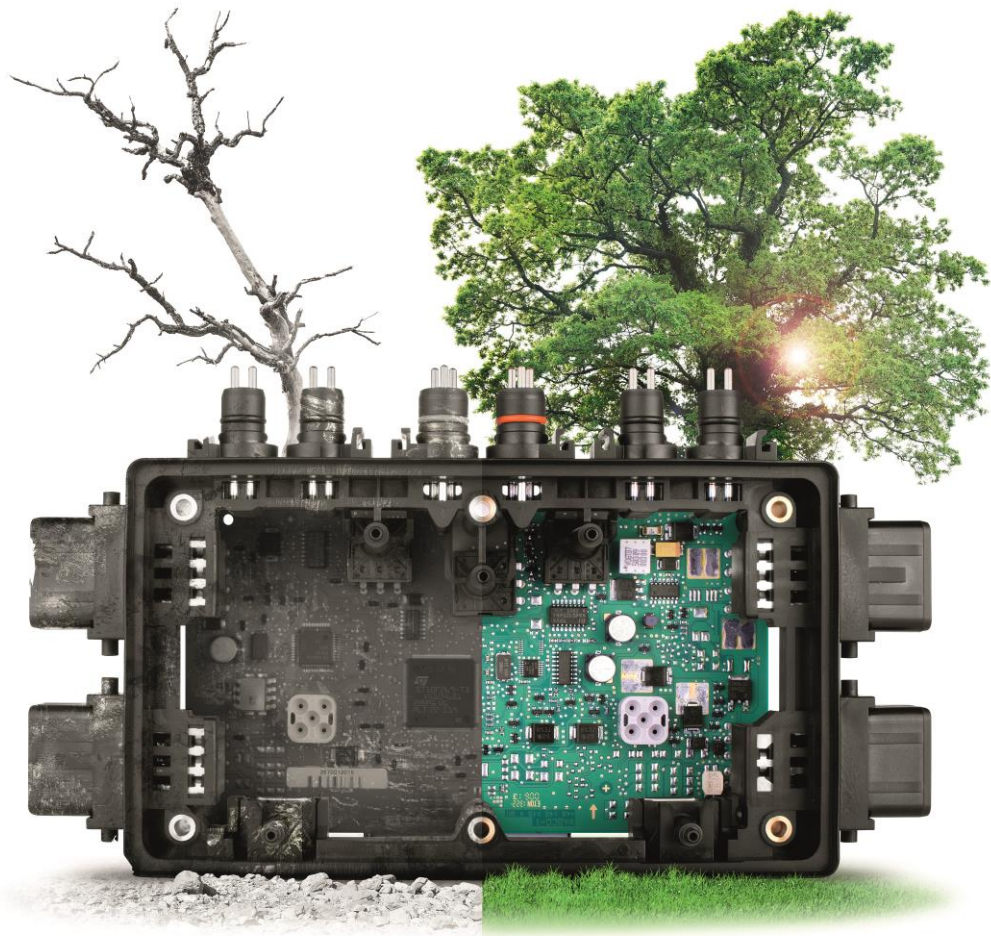
It's as simple as that!

For more info, visit [WABCO Customer Centre](#)

Core acceptance criteria

transaction of buying cores

TEBS-E



ECO LOGICAL
NOMICAL



WABCO
REMAN SOLUTIONS

General information

ACCEPTED



- Core must be in an off-vehicle condition.
- Core must meet acceptance standards established within this document.
- Core mechanical integrity must remain intact (no holes, cracks, disassembled components)
- Any electronic inside core must not have contact with environmental pollutants, especially water.

REJECTED



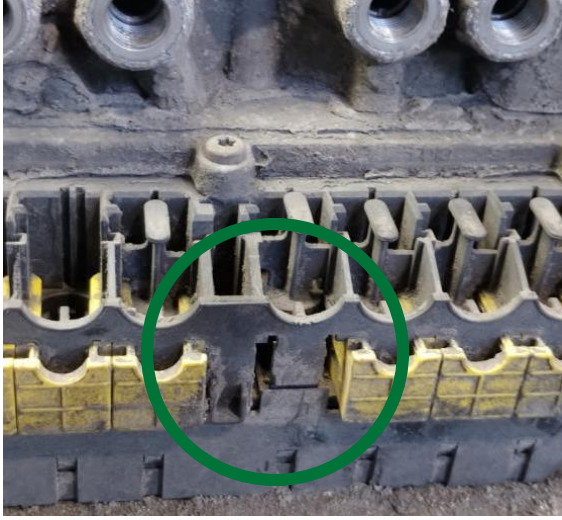
- The core is a not complete unit and disassembled or altered in any manner
- The core is damaged by non-operational causes such as car crash damage, fire, flood, crack.
- The core has been improperly repaired / serviced.

Acceptance criteria

ACCEPTED



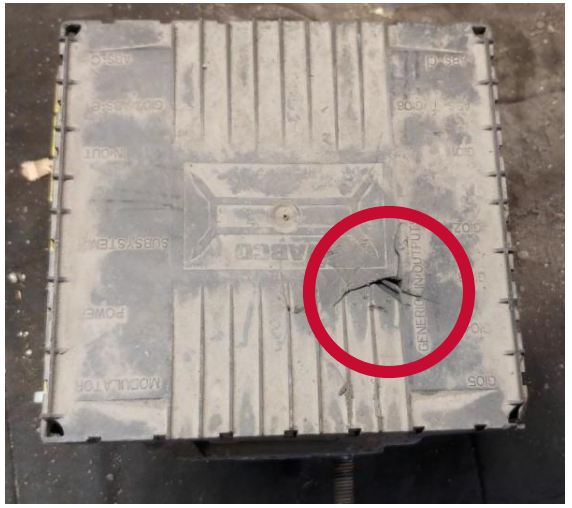
Missing protection covers and plugs



REJECTED



Holes, cracks in ECU cover



ACCEPTED



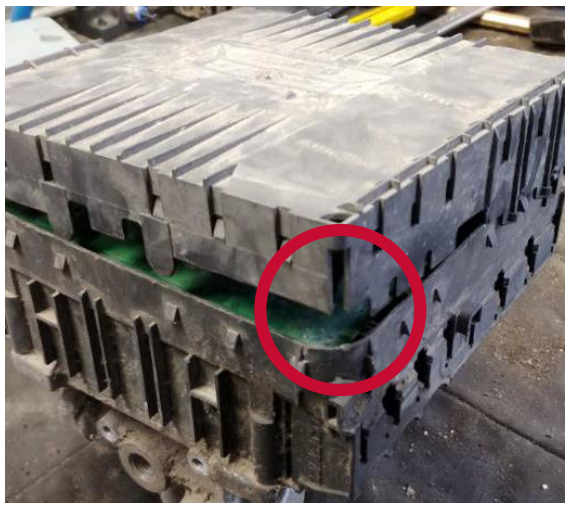
Damaged ribs on the ECU Cover



REJECTED



Partially dismantled

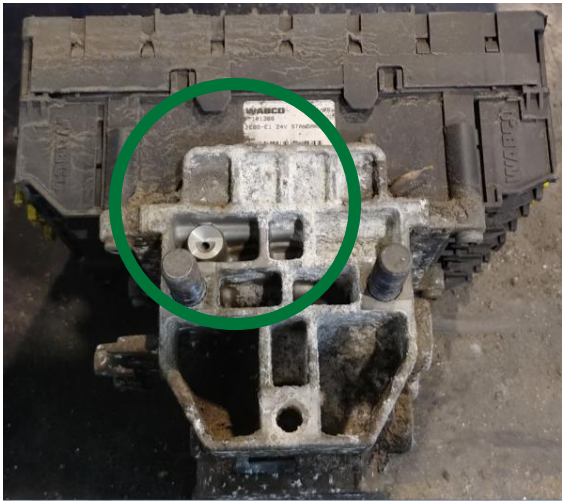


Acceptance criteria

ACCEPTED



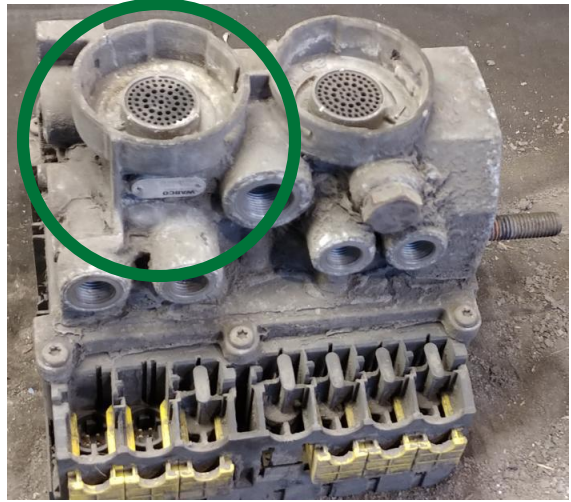
Surface corrosion



ACCEPTED



Missing silencers



ACCEPTED



Missing studs



ACCEPTED



Damaged ports



Acceptance criteria

ACCEPTED



The electronics version E4 upwards



ACCEPTED



Missing small plastic parts on ECU



REJECTED



Deformed / distorted ECU



Your used part can go for *a second life!* Return it to WABCO and get your refund!

When you buy remanufactured part from WABCO REMAN SOLUTIONS and return your used cores to us, you will get a **refund!** On top of that, by producing less waste, you will also **save** on costs of disposal and **benefit the environment.**



THIS IS HOW IT WORKS:

- **Use the box** of the remanufactured parts to return your used cores.



- **Contact your authorized WABCO partner** www.wabco-auto.com/findwabco to pick up the box.
 - **You will receive a refund** for the surcharge you've paid with the purchase of your remanufactured parts.
- It's as simple as that!**

For more info, see myWABCO
<https://www.am.wabco-auto.com>

WABCO
REMAN SOLUTIONS



AFTERMARKET

Core acceptance criteria

PNEUMATIC CLUTCH ACTUATOR



ECO LOGICAL
NOMICAL



WABCO
REMAN SOLUTIONS

General information

ACCEPTED



- Core must be in an off-vehicle condition.
- Core must meet acceptance standards established within this document.
- The PCA must not be cracked, broken or deformed.
- The threads must not be damaged.
- The PCA must be complete and not disassembled.
- Acceptable part numbers:
 - 970 150 001 0
 - 970 150 008 0

REJECTED



- The core is a not complete unit and disassembled or altered in any manner.
- The core is damaged by non-operational causes such as car crash damage, fire, crack.
- The core has been improperly repaired / serviced.

Acceptance criteria

ACCEPTED



Surface contamination



Acceptance criteria

ACCEPTED



Dirt or corrosion on flange:



ACCEPTED



Corroded ports:



ACCEPTED



Scratches on external surface



Acceptance criteria

REJECTED



Serious damages to the body. Missing material:



REJECTED



Missing, bent pins or corrosion in the connector:



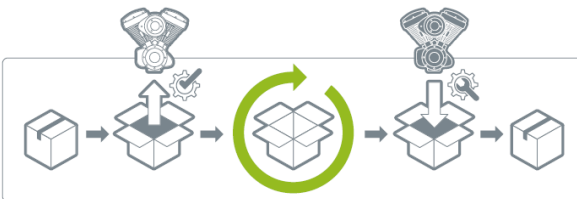
Your used part can go for *a second life!* Return it to WABCO and get your refund!

When you buy remanufactured part from WABCO REMAN SOLUTIONS and return your used cores to us, you will get a **refund!** On top of that, by producing less waste, you will also **save** on costs of disposal and **benefit the environment.**



THIS IS HOW IT WORKS:

- **Use the box** of the remanufactured parts to return your used cores.



- **Contact your authorized WABCO partner**
<https://www.wabco-customercentre.com/catalog/en/ALF>
- **You will receive a refund** for the surcharge you've paid with the purchase of your remanufactured parts.

It's as simple as that!

For more info, visit [WABCO Customer Centre](#)



AFTERMARKET

Core acceptance criteria

KNORR BREMSE CALIPER



ECO LOGICAL
NOMICAL



WABCO
REMAN SOLUTIONS

General information

ACCEPTED



- Core must be from one of type Knorr Bremse caliper.
- Core must be in an off-vehicle condition.
- Core must meet acceptance standards established within this document.
- The brake caliper must not be cracked, broken or deformed.
- The body must not be strongly corroded or burnt (structure stability disturbance).
- The threads must not be damaged.
- The caliper must be complete and not disassembled.
- No modification of components or housings (only original parts).

REJECTED



- The core is a not complete unit and disassembled or altered in any manner.
- The core is damaged by non-operational causes such as car crash damage, fire, crack, stuff losses.
- Excessive corrosion on the housing with no usable components.
- Damaged housing from oxi-fuel cutting – caliper is not usable.
- Damaged bolts – bolts are corroded or cranked head.
- The core has been improperly repaired / serviced.

Acceptance criteria

ACCEPTED



Surface Corrosion



Acceptance criteria

ACCEPTED



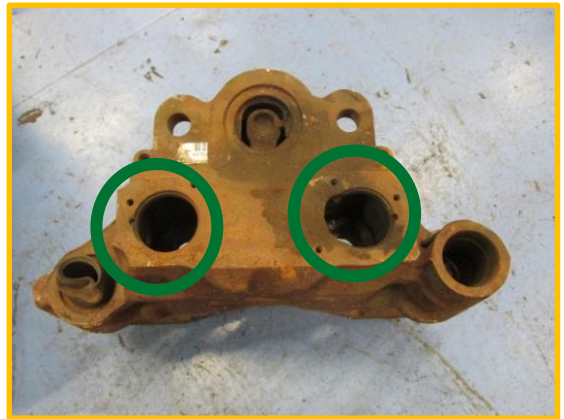
Missing part



ACCEPTED



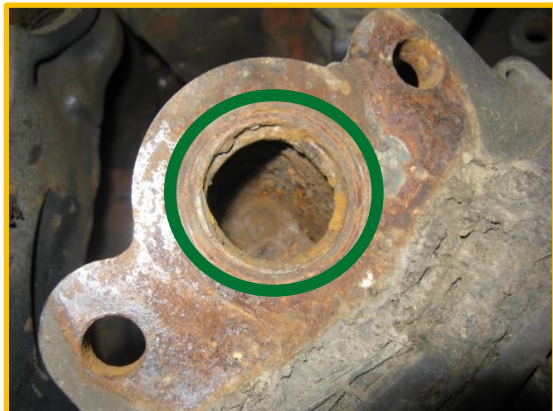
Missing part



ACCEPTED



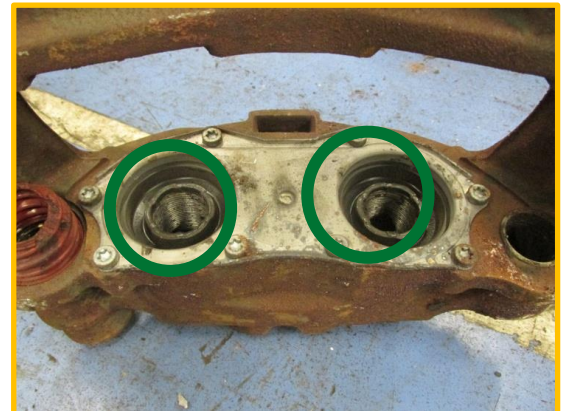
Missing part



ACCEPTED



Missing part

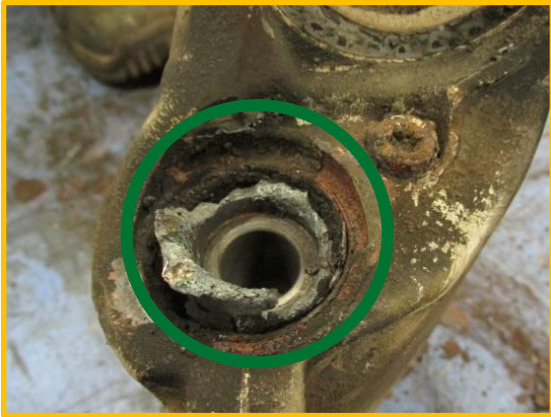


Acceptance criteria

ACCEPTED



Damaged components



ACCEPTED



Damaged components



ACCEPTED



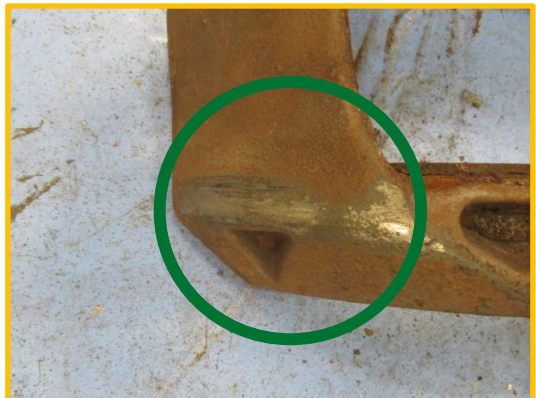
Slight damage to the housing



ACCEPTED



Slight damage to the housing



Acceptance criteria

REJECTED



Heavy pitting corrosion (Not off-vehicle condition)



REJECTED



Pitting corrosion (structure of cast is degraded)



Acceptance criteria

REJECTED



Cracked frame or carrier



Cut screw (corrosion)



REJECTED



Disassembled devices



REJECTED



Cracked frame or carrier



Acceptance criteria

REJECTED



Heavily damaged housing



REJECTED



Heavily damaged housing



REJECTED



Your used part can go for *a second life!* Return it to WABCO and get your refund!

When you buy remanufactured part from WABCO REMAN SOLUTIONS and return your used cores to us, you will get a **refund!** On top of that, by producing less waste, you will also **save on costs of disposal** and **benefit the environment.**



THIS IS HOW IT WORKS:

- **Use the box** of the remanufactured parts to return your used cores.



- **Contact your authorized WABCO partner**
<https://www.wabco-customercentre.com/catalog/en/ALF>
 - **You will receive a refund** for the surcharge you've paid with the purchase of your remanufactured parts.
- It's as simple as that!**

For more info, visit [WABCO Customer Centre](#)



AFTERMARKET

Core acceptance criteria

GEAR CONTROL UNIT



ECO LOGICAL
NOMICAL



WABCO
REMAN SOLUTIONS

General information

ACCEPTED



- Core must be in an off-vehicle condition.
- Core must meet acceptance standards established within this document.
- The following modules are accepted:
 - Gearbox Actuator for Daimler Gearbox: Full Unit, Lower part, Electronics
 - Gearbox Actuator for Volvo Gearbox: Full Unit, Lower (Mechanical) and Upper (with Electronics) Part
 - Pneumatic Gearbox Actuator for ZF Gearbox: Full Unit, Lower (Mechanical) and Upper (with Electronic) Part
 - Hydraulic Gearbox Actuator for ZF Gearbox: Full Unit

REJECTED



- The core is a not complete unit and disassembled or altered in any manner (expect mechanical/actuation and electronic parts case).
- The core is damaged by non-operational causes such as car crash damage, rough handling, fire or improper removal, crack, stuff losses.
- There has been prior attempt at repair/rebuilding the component.

Acceptable part numbers

- The cores of the Pneumatic Gearbox Actuator for **ZF Gearbox** cores must concern the following Part Numbers:

WABCO Part number	WABCO REMAN Part number
421 355 011 0	421 355 011 R
421 355 012 0	421 355 012 R
421 355 015 0	421 355 015 R
421 355 022 0	421 355 022 R
421 355 023 0	421 355 023 R
421 355 950 2	421 355 950 R

- The cores of Gearbox Actuator for **Daimler Gearbox** must concern the following part numbers:

WABCO Part number	WABCO REMAN Part number
421 353 001 0	421 353 007 R
421 353 002 0	
421 353 003 0	
421 353 004 0	
421 353 005 0	
421 353 006 0	
421 353 007 0	
421 353 400 0	421 353 400 R
421 353 401 0	
421 353 402 0	
421 353 403 0	
421 353 404 0	

- The cores of the Hydraulic Gearbox Actuator for **ZF Gearbox** must concern the following Part Numbers:

WABCO Part number	WABCO REMAN Part number
477 001 030 0	477 001 030 R
477 001 031 0	477 001 031 R

- The cores of Gearbox Actuator for **Volvo Gearbox** must concern the following part numbers:

WABCO Part number	
12 V	24V
421 364 001 0	421 365 000 0
421 364 002 0	421 365 002 0
421 364 003 0	421 365 004 0
421 366 001 0	421 365 005 0
421 366 002 0	421 365 006 0
421 365 945 2	421 365 007 0
	421 365 008 0
	421 365 009 0
	421 365 010 0
	421 365 011 0
	421 365 012 0
	421 365 013 0
	421 367 001 0
	421 367 002 0
	421 369 001 0

Acceptance criteria

ACCEPTED



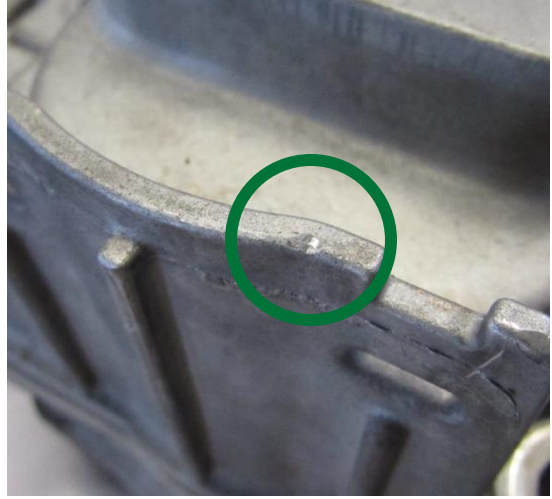
Surface Corrosion



ACCEPTED



Small signs of hit



ACCEPTED



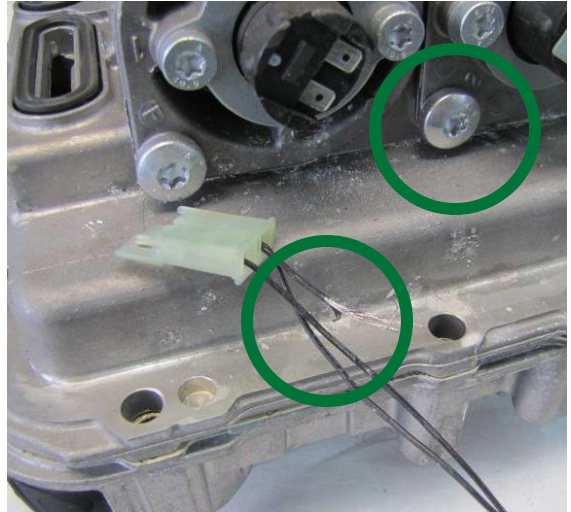
Broken or damaged Cylinder Cover



ACCEPTED



Cut wires



Acceptance criteria

ACCEPTED



Scratches on external surface



ACCEPTED



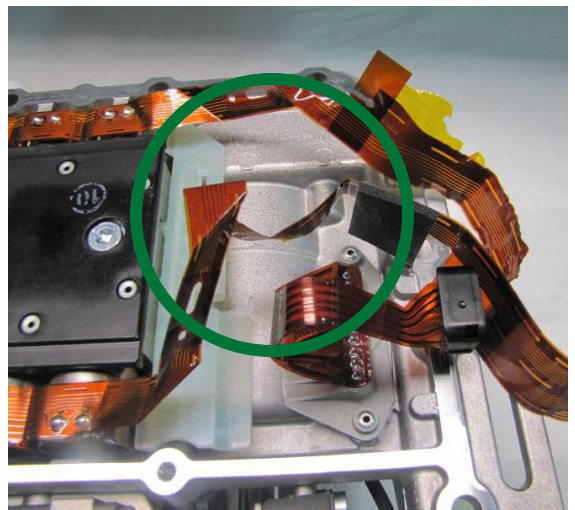
Scratches on external surface



ACCEPTED



Damaged or broken, cut ribbons



Acceptance criteria

REJECTED



Damages or signs of hit on ECU



REJECTED



Damaged connector



REJECTED



Hard damages of ECU cover



REJECTED



Serious damages to the body.
Missing material



Acceptance criteria

REJECTED



Significant signs of hit on external surfaces



Your used part can go for *a second life!* Return it to WABCO and get your refund!

When you buy remanufactured part from WABCO REMAN SOLUTIONS and return your used cores to us, you will get a **refund!** On top of that, by producing less waste, you will also **save** on costs of disposal and **benefit the environment.**



THIS IS HOW IT WORKS:

- **Use the box** of the remanufactured parts to return your used cores.



- **Contact your authorized WABCO partner**
<https://www.wabco-customercentre.com/catalog/en/ALF>
- **You will receive a refund** for the surcharge you've paid with the purchase of your remanufactured parts.

It's as simple as that!

For more info, visit [WABCO Customer Centre](#)



AFTERMARKET

Core acceptance criteria

E-APU



ECO LOGICAL
NOMICAL



WABCO
REMAN SOLUTIONS

General information

ACCEPTED



- Core must be a WABCO part number.
- Core must be in an off-vehicle condition.
- Core must be complete and not disassembled.
- Core must meet acceptance standards established within this document.
- Core must not be cracked, broken or deformed.
- Core must not be strongly corroded or burnt (structure stability disturbance).

REJECTED

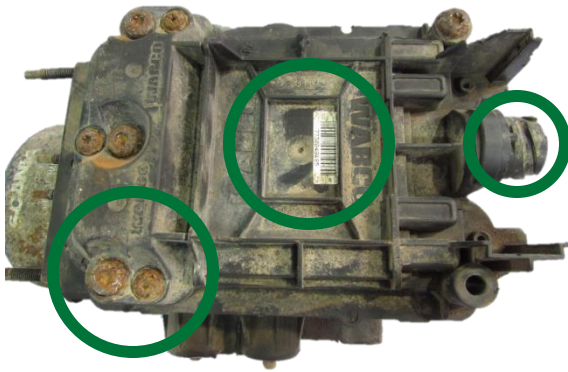
- The core is a not complete unit and disassembled or altered in any manner.
- The core is damaged by non-operational causes such as car crash damage, rough handling, fire or improper removal, crack, stuff losses.
- The core has been improperly repaired / serviced.
- There has been prior attempt at rebuilding the component.

Acceptance criteria

ACCEPTED



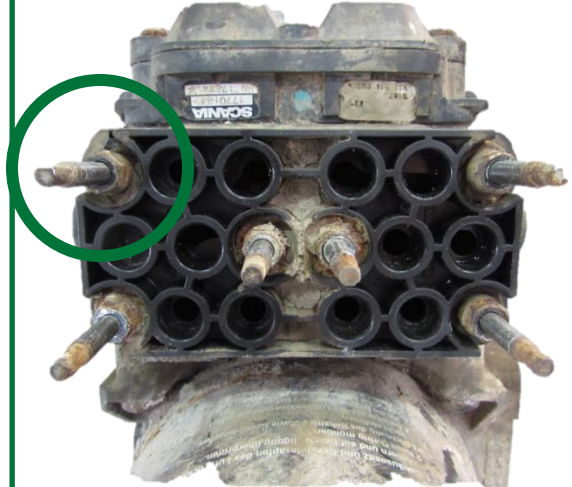
Corrosion on screws, Dirt



ACCEPTED



Corroded bolts



ACCEPTED



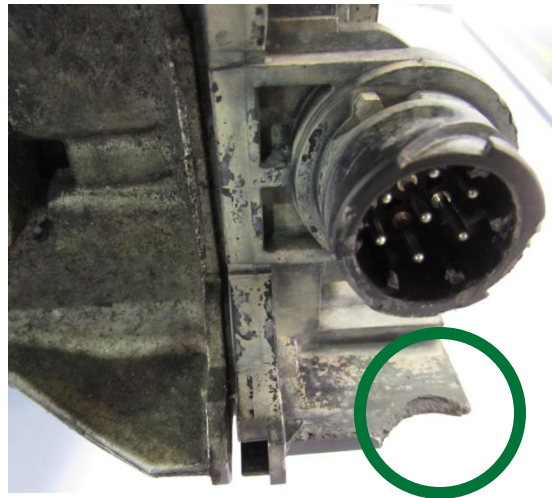
Corrosion on Dryer



ACCEPTED



Missing small parts of plastic cover

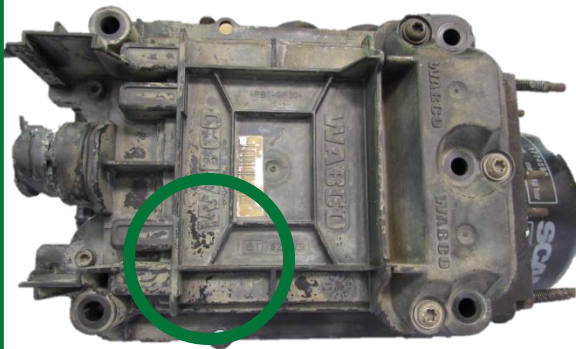


Acceptance criteria

ACCEPTED



Scratches on plastic parts



ACCEPTED



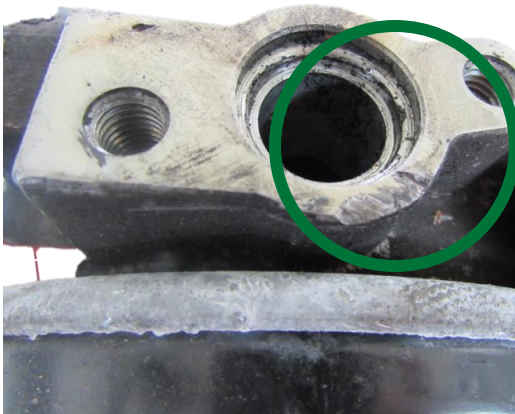
Missing Bolts



ACCEPTED



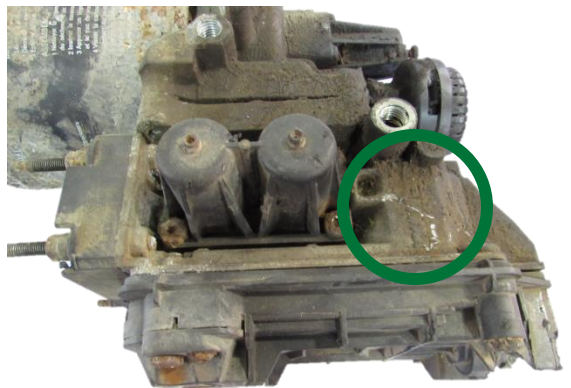
Damages on connection ports



ACCEPTED



Scratches on outer surfaces



Acceptance criteria

ACCEPTED



Paint on plastic cover or completely painted



Acceptance criteria

REJECTED



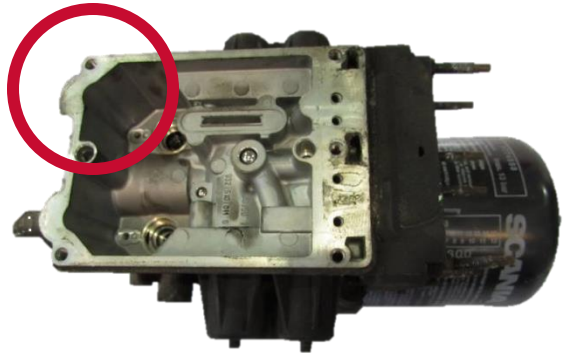
Missing, bent pins or corrosion in the connector



REJECTED



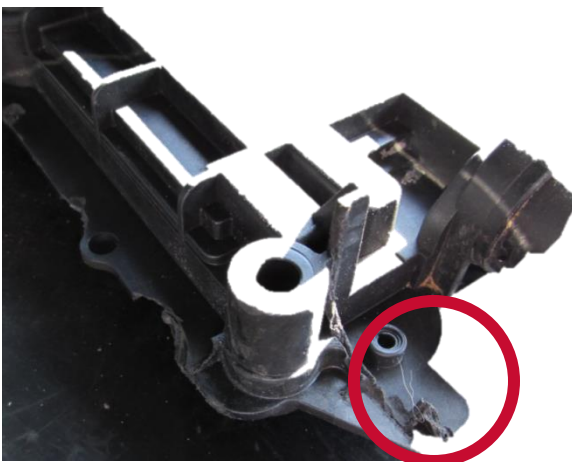
Missing ECU or other parts



REJECTED



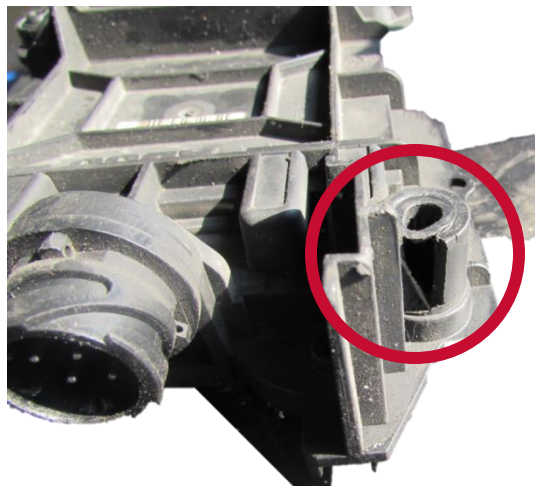
Broken plastic cover



REJECTED



Missing parts of plastic cover

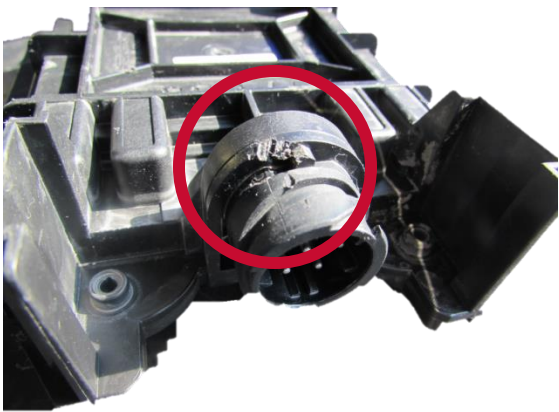


Acceptance criteria

REJECTED



Broken connector thread



ATTENTION



Uncarefull storage cause core damage and lead them to „rejected” state



Your used part can go for *a second life!* Return it to WABCO and get your refund!

When you buy remanufactured part from WABCO REMAN SOLUTIONS and return your used cores to us, you will get a **refund!** On top of that, by producing less waste, you will also **save** on costs of disposal and **benefit the environment.**



THIS IS HOW IT WORKS:

- **Use the box** of the remanufactured parts to return your used cores.



- **Contact your authorized WABCO partner**
<https://www.wabco-customercentre.com/catalog/en/ALF>
- **You will receive a refund** for the surcharge you've paid with the purchase of your remanufactured parts.

It's as simple as that!

For more info, visit [WABCO Customer Centre](#)



AFTERMARKET

Core acceptance criteria

CBU



ECO LOGICAL
NOMICAL



WABCO
REMAN SOLUTIONS

General information

ACCEPTED



- Core must be a WABCO part number
- Core must be in an off-vehicle condition.
- Core must meet acceptance standards established within this document.
- The braking unit must not be cracked, broken or deformed.
- The body must not be strongly corroded or burnt (structure stability disturbance).
- The threads must not be damaged or deformed
- The braking unit must be complete and not disassembled.

REJECTED



- The core is a not complete unit and disassembled or altered in any manner.
- The core is damaged by non-operational causes such as car crash damage, fire, crack, stuff losses.
- The core has been improperly repaired / serviced.

Acceptance criteria

ACCEPTED



Small scratches on the body



ACCEPTED



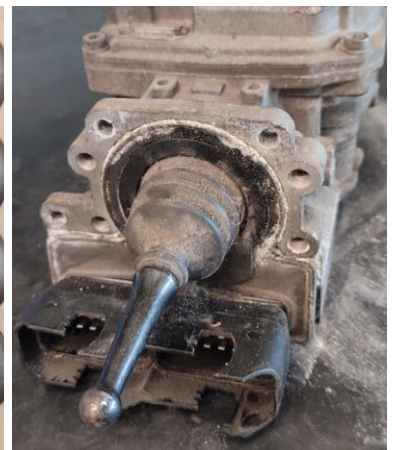
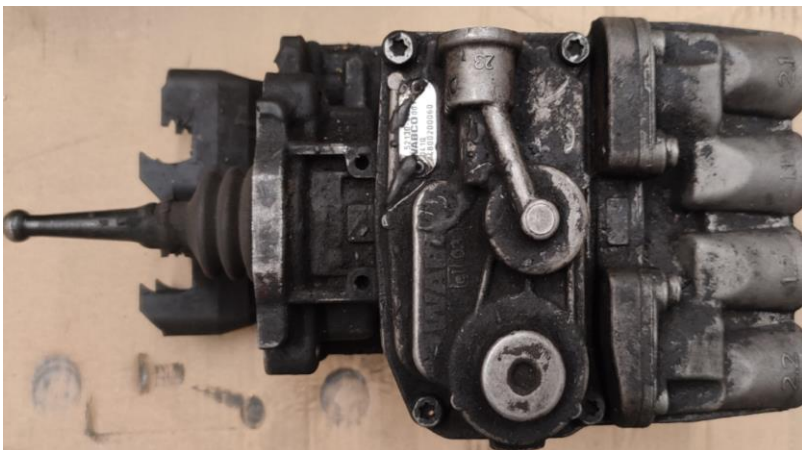
Discoloration



ACCEPTED



Contamination

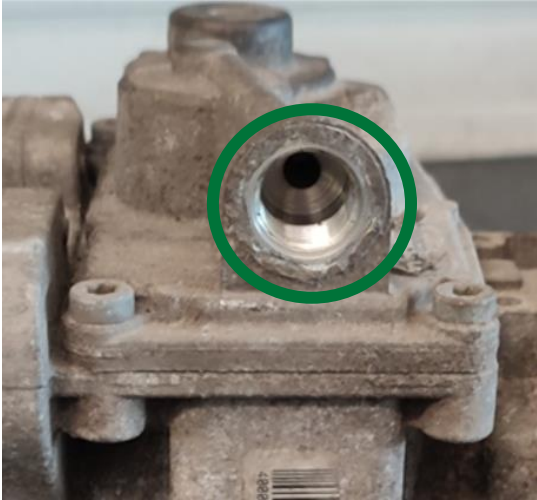


Acceptance criteria

ACCEPTED



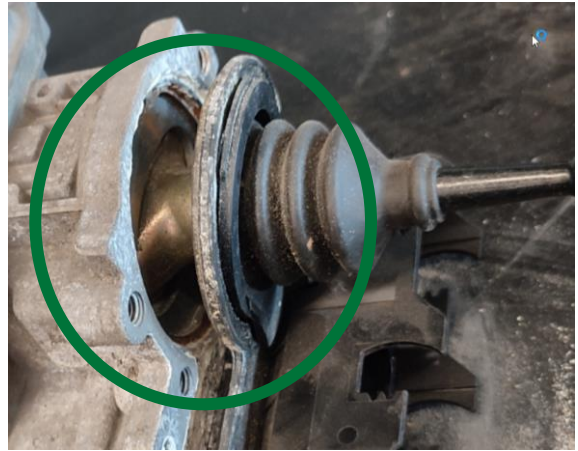
Corrosion on ports



ACCEPTED



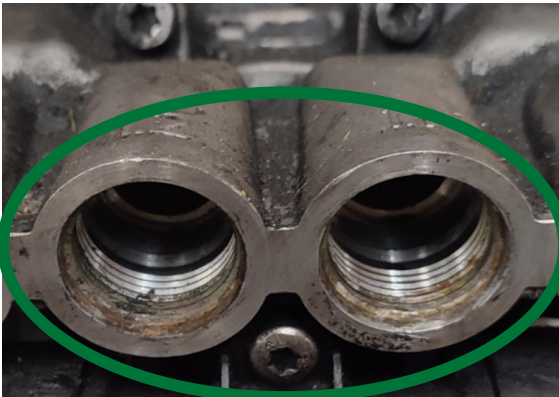
Dismantled dust cover



ACCEPTED



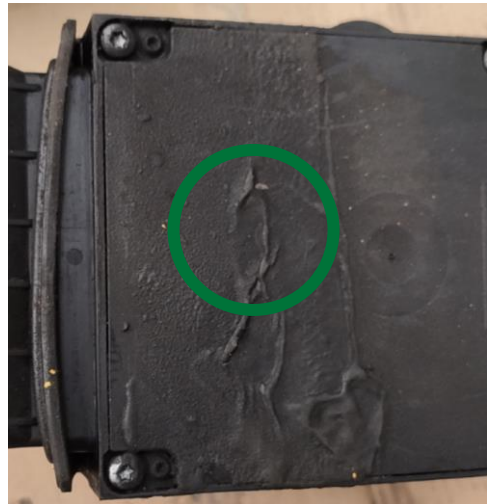
Rust and discoloration on ports



ACCEPTED



Contamination and bituminous mass



Acceptance criteria

ACCEPTED



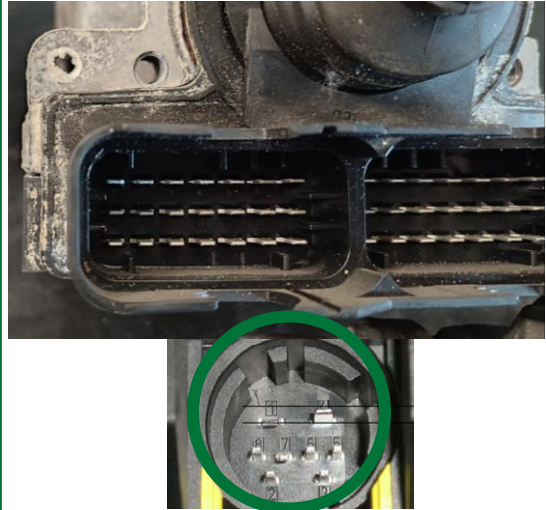
Corroded screws



ACCEPTED



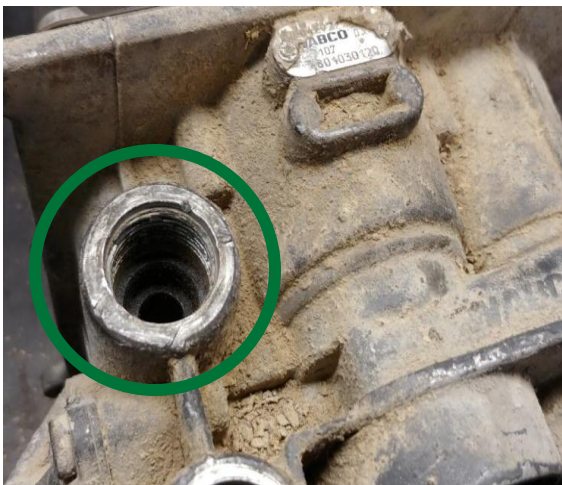
Bent Pins



ACCEPTED



Damaged ports



Acceptance criteria

REJECTED



Missing screws



REJECTED



Dismantled device or missing components



REJECTED



Serious damages or signs of hit on the external surfaces, missing material



Your used part can go for *a second life!* Return it to WABCO and get your refund!

When you buy remanufactured part from WABCO Reman Solutions and return your used cores to us, you will get a **refund!** On top of that, by producing less waste, you will also **save on costs of disposal** and **benefit the environment.**



THIS IS HOW IT WORKS:

- **Use the box** of the remanufactured parts to return your used cores.



- **Contact your authorized WABCO partner**
<https://www.wabco-customercentre.com/catalog/en/ALF>
- **You will receive a refund** for the surcharge you've paid with the purchase of your remanufactured parts.

It's as simple as that!

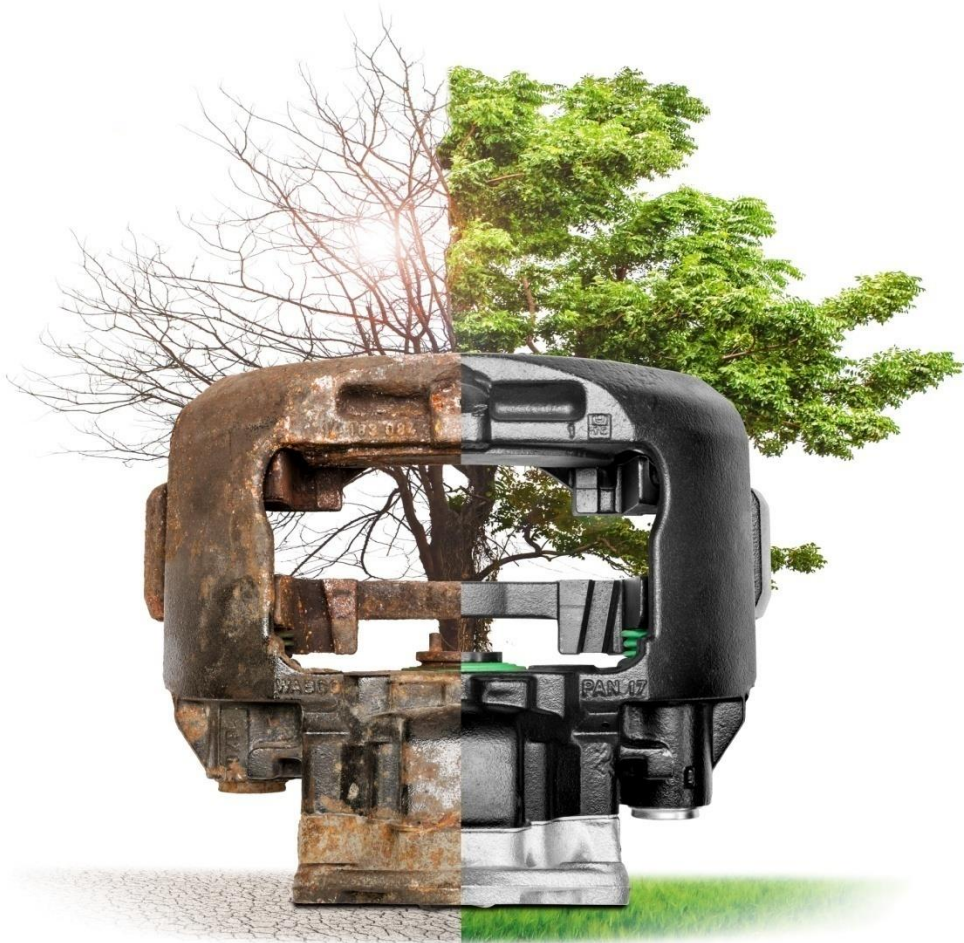
For more info, visit [WABCO Customer Centre](#)



AFTERMARKET

Core acceptance criteria

BRAKE CALIPER



ECO LOGICAL
NOMICAL



WABCO
REMAN SOLUTIONS

General information

ACCEPTED



- Core must be for brake discs either 330mm, 375 mm or 430 mm.
- Core must be from one of type ADB: PAN-range MAXX-range
- Core must be in an off-vehicle condition.
- Core must meet acceptance standards established within this document.
- The brake caliper must not be cracked, broken or deformed.
- The body must not be strongly corroded or burnt (structure stability disturbance).
- The threads must not be damaged.
- The caliper must be complete and not disassembled.

REJECTED



- The core is a not complete unit and disassembled or altered in any manner.
- The core is damaged by non-operational causes such as car crash damage, fire, crack, stuff losses.
- The core has been improperly repaired / serviced.

Acceptance criteria

ACCEPTED



Surface Corrosion



Acceptance criteria

ACCEPTED



Cut adjusting screw



ACCEPTED



Missing part



ACCEPTED



Cut adjusting screw (metal screw)



ACCEPTED



Traces of overheating



Acceptance criteria

REJECTED



Heavy pitting corrosion (Not off-vehicle condition)



REJECTED



Pitting corrosion (structure of cast is degraded)



Acceptance criteria

REJECTED



Cracked frame or carrier



Cut screw (corrosion)



REJECTED



Disassembled devices



REJECTED



Cracked frame or carrier



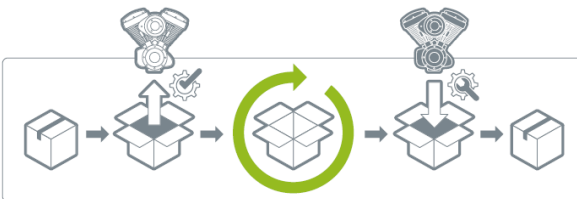
Your used part can go for *a second life!* Return it to WABCO and get your refund!

When you buy remanufactured part from WABCO Reman Solutions and return your used cores to us, you will get a **refund!** On top of that, by producing less waste, you will also **save** on costs of disposal and **benefit the environment.**



THIS IS HOW IT WORKS:

- **Use the box** of the remanufactured parts to return your used cores.



- **Contact your authorized WABCO partner**
<https://www.wabco-customercentre.com/catalog/en/ALF>
- **You will receive a refund** for the surcharge you've paid with the purchase of your remanufactured parts.

It's as simple as that!

For more info, visit [WABCO Customer Centre](#)



AFTERMARKET

Core acceptance criteria

AXLE MODULATOR



ECO LOGICAL
NOMICAL



WABCO
REMAN SOLUTIONS

General information

ACCEPTED



- Core must be in an off-vehicle condition.
- Core must meet acceptance standards established within this document.
- The Axle Modulator must not be cracked, broken or deformed.
- The Axle Modulator must be complete and not disassembled.
- Acceptable part numbers:

AxMo 1	Remanufactured AxMo Gen I
480 103 XXX 0	480 103 XXX R

AxMo 2	AxMo 3	
4801040010	4801041060	4801050060
4801040020	4801041070	4801050070
4801040030		
4801040050		
4801040060		
4801040070		
4801040080		
4801040090		

REJECTED



- The core is a not complete unit and disassembled or altered in any manner.
- The core is damaged by non-operational causes such as car crash damage, fire or improper removal, crack.
- There has been prior attempt at rebuilding the component.
- The core has been improperly repaired / serviced.

Acceptance criteria

ACCEPTED



Small scratches on the body, silencer and covers



ACCEPTED



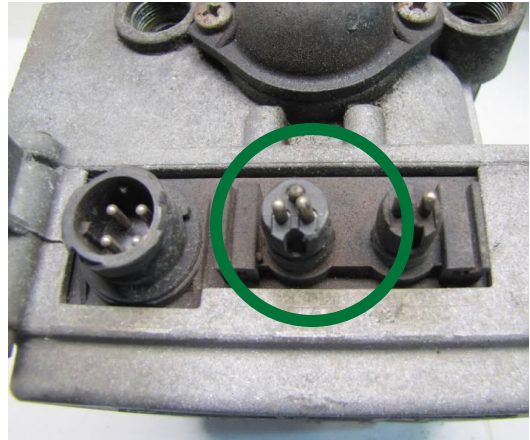
Damaged ports



ACCEPTED



Bent Pins, Scratches on connector
(generation 1, 480103XXXX)

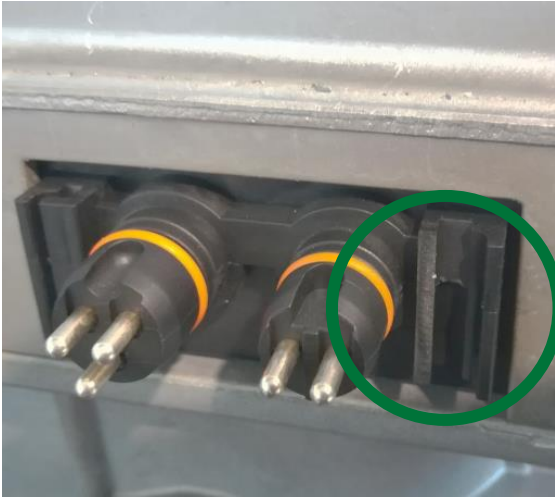


Acceptance criteria

ACCEPTED



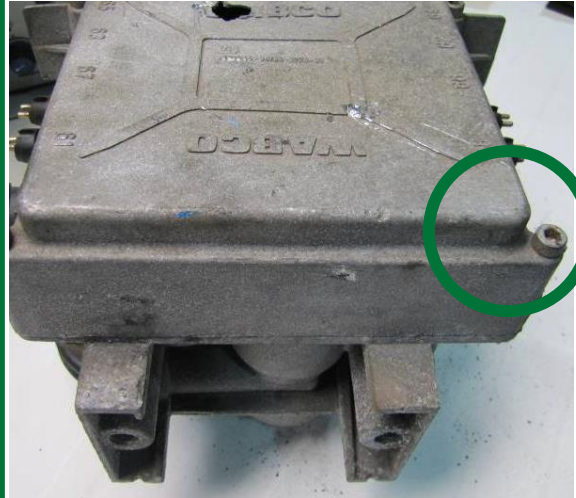
Broken part of connector frame (gen1)



ACCEPTED



Cutted, damaged or missing cover flips



ACCEPTED

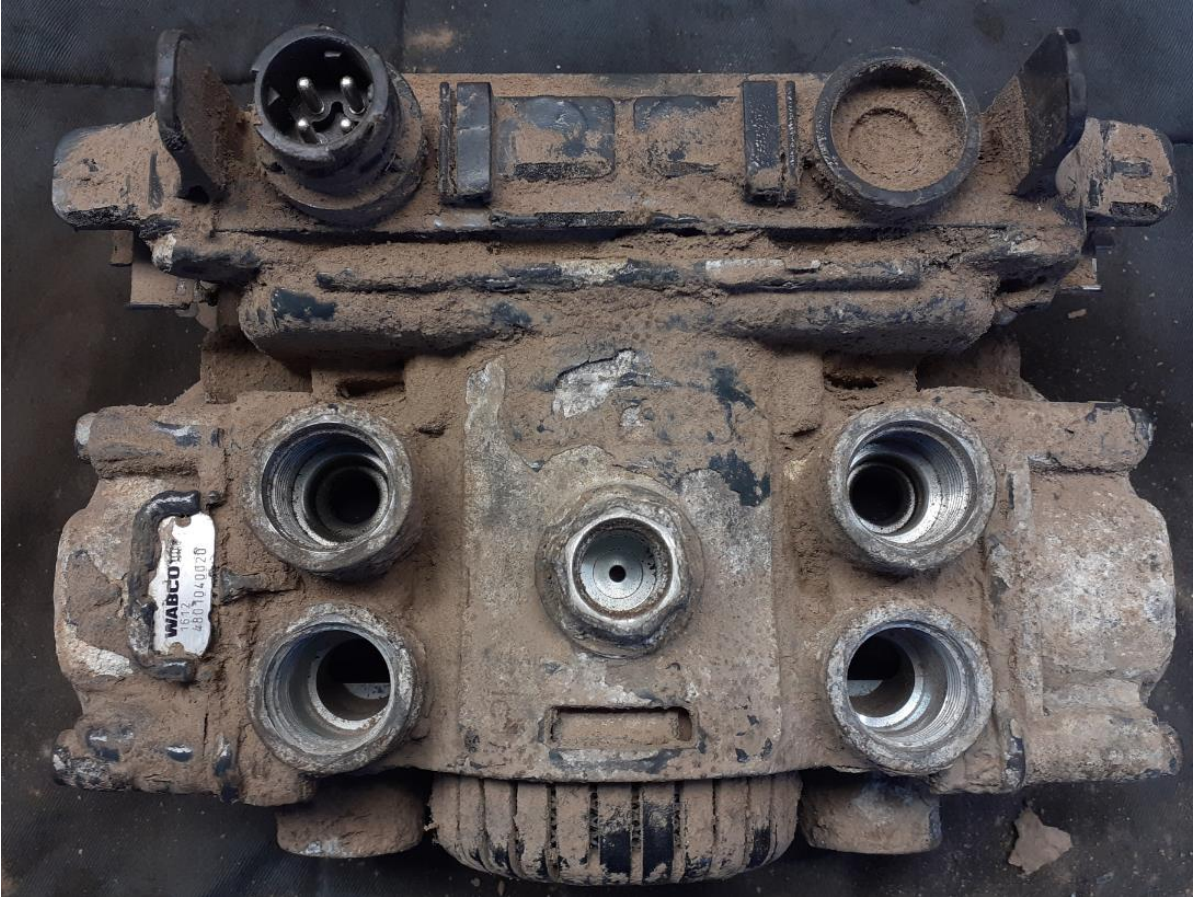


Acceptance criteria

ACCEPTED



Surface contamination, dirt:



Acceptance criteria

ACCEPTED



Corroded ports:



ACCEPTED



Corroded screws:



ACCEPTED



Scratches on external surface



Acceptance criteria

ACCEPTED



Missing small parts of plastic cover:



ACCEPTED



Broken rib of plastic cover:



ACCEPTED



Missing silencer:

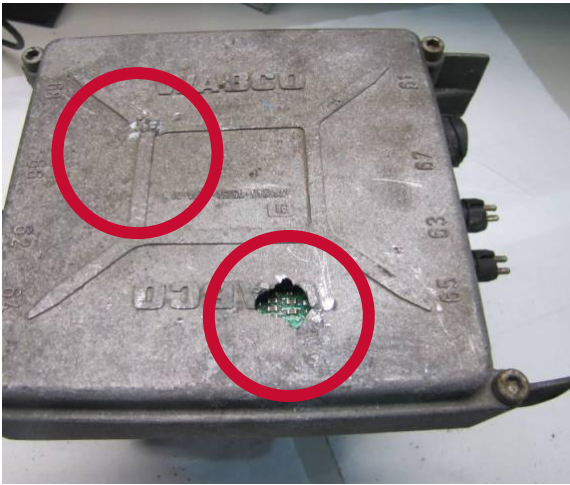


Acceptance criteria

REJECTED



Serious damages or signs of hit on the external surfaces

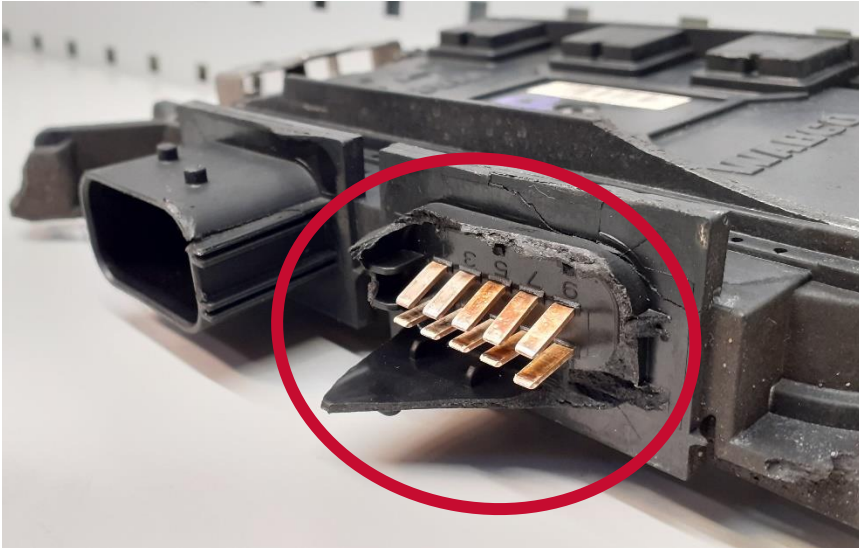


Acceptance criteria

REJECTED



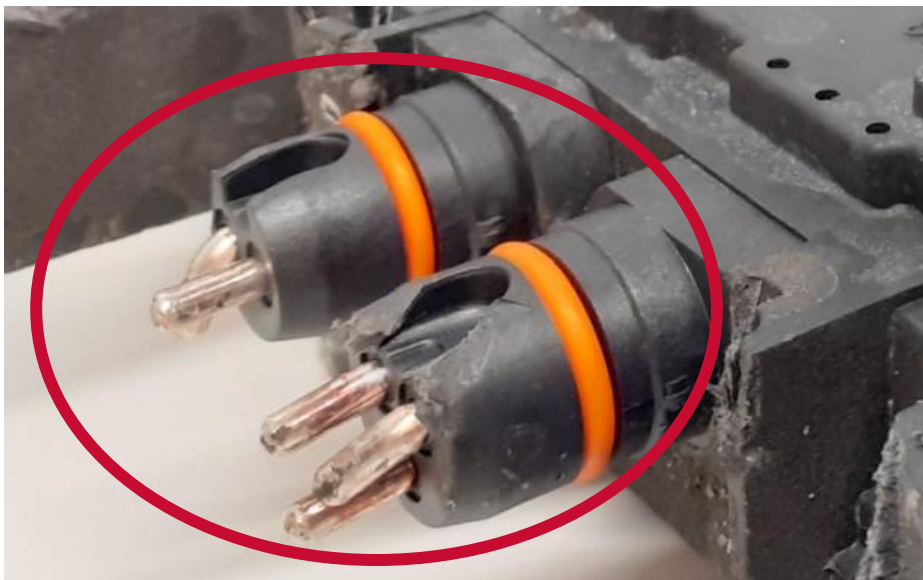
Serious damages to the ECU, broken connector housing (generation 2 & 3):



REJECTED



Missing, bent pins or corrosion in the connector (generation 2 & 3):

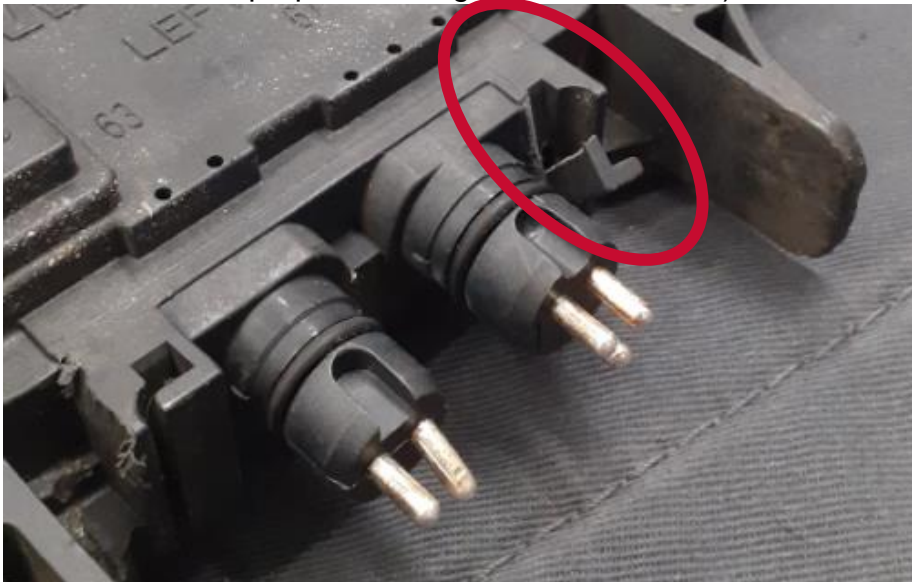


Acceptance criteria

REJECTED



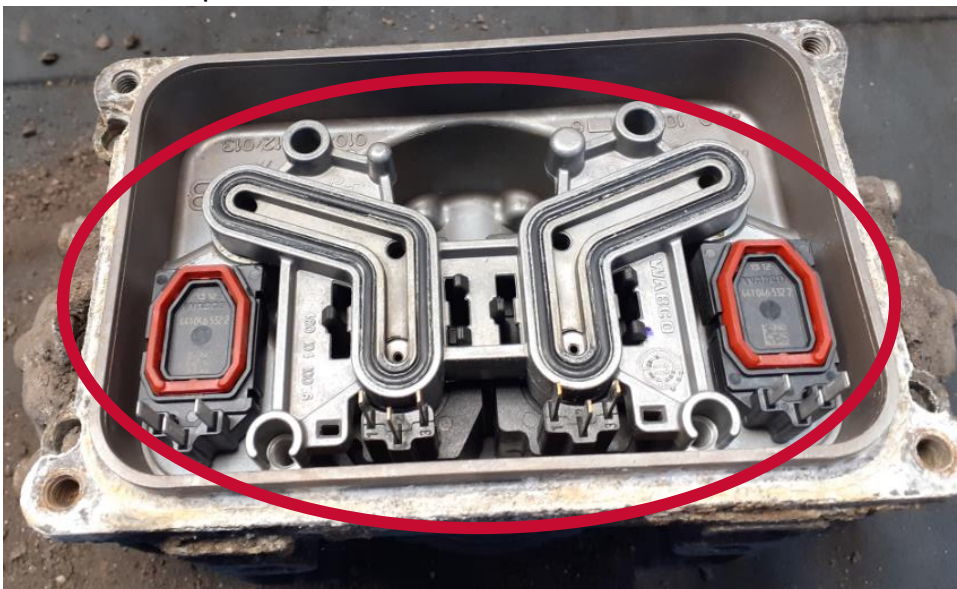
Broken shackles due to improper handling (generation 2 & 3):



REJECTED



Missing ECU or other parts



Your used part can go for *a second life!* Return it to WABCO and get your refund!

When you buy remanufactured part from WABCO REMAN SOLUTIONS and return your used cores to us, you will get a **refund!** On top of that, by producing less waste, you will also **save on costs of disposal** and **benefit the environment.**



THIS IS HOW IT WORKS:

- **Use the box** of the remanufactured parts to return your used cores.



- **Contact your authorized WABCO partner**
<https://www.wabco-customercentre.com/catalog/en/ALF>
- **You will receive a refund** for the surcharge you've paid with the purchase of your remanufactured parts.

It's as simple as that!

For more info, visit [WABCO Customer Centre](#)



AFTERMARKET

Core acceptance criteria

AIR COMPRESSOR



ECO LOGICAL
NOMICAL



WABCO
REMAN SOLUTIONS

General information

ACCEPTED



- Core must be a WABCO part number.
- Core must be in an off-vehicle condition.
- Core must meet acceptance standards established within this document.
- The Compressor must not be cracked, broken or deformed.
- The Air Compressors must not be strongly corroded or burnt (structure stability disturbance).

REJECTED



- The core is a not complete unit and disassembled or altered in any manner.
- The core is damaged by non-operational causes such as car crash damage rough handling, fire or improper removal, crack, stuff losses.
- There has been prior attempt at repair/rebuilding the component.
- The threads are damaged. The screw's holes are deformed

Acceptance criteria

ACCEPTED



Surface corrosion and dirt



ACCEPTED



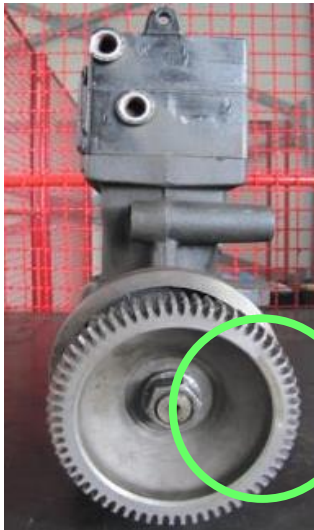
Signs of hit on external surfaces



ACCEPTED



Scratches on the gear wheel



ACCEPTED



Scratches, paint on the cylinder head



Acceptance criteria

ACCEPTED



Scratches, paint on the crankcase



ACCEPTED



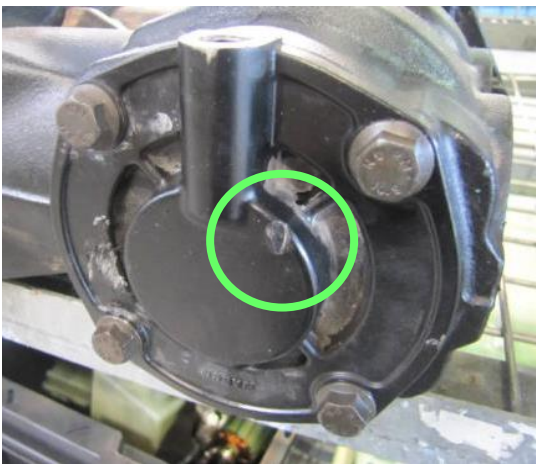
Deformation of the gear wheel



ACCEPTED



Broken or damaged Endcover



ACCEPTED

Missing wheel nut



Acceptance criteria

ACCEPTED



Light deformation of the front surface of crankshaft (thread not damaged)



Acceptance criteria

REJECTED



Heavy pitting corrosion (Not off-vehicle condition)



REJECTED



Sign of hit (damage on the crankcase sealing area)



REJECTED



Damage of the device



REJECTED



Deformed (damaged) thread/ thread hole



Acceptance criteria

REJECTED



Not complete (partially disassembled) unit



REJECTED



Deformed thread in crankshaft



Your used part can go for *a second life!* Return it to WABCO and get your refund!

When you buy remanufactured part from WABCO REMAN SOLUTIONS and return your used cores to us, you will get a **refund!** On top of that, by producing less waste, you will also **save on costs of disposal** and **benefit the environment.**



THIS IS HOW IT WORKS:

- **Use the box** of the remanufactured parts to return your used cores.



- **Contact your authorized WABCO partner** <https://www.wabco-customercentre.com/catalog/en/ALF> to pick up the box.
- **You will receive a refund** for the surcharge you've paid with the purchase of your remanufactured parts.

It's as simple as that!

For more info, visit [WABCO Customer Centre](#)